



**MEMORY
DESCRIPTIVE**

1. GENERAL CONCEPT

GAIA Project is located at Av. México #528, Colonia Centro in Jarretaderas, Banderas Bay, Nayarit.

The land has an area of 1,159 m².

Residential complex consisting of 20 apartments distributed in 3 towers of 4 floors each
a.

2 and 3 bedroom apartments.

It has a common area with pool, terrace and garden.



1. GENERAL CONCEPT



2. LOCATION

A few meters from the hotel zone of Nuevo Vallarta, shopping centers, golf courses, marina, restaurants and the Vidanta World tourist complex, which makes GAIA an excellent value added option.



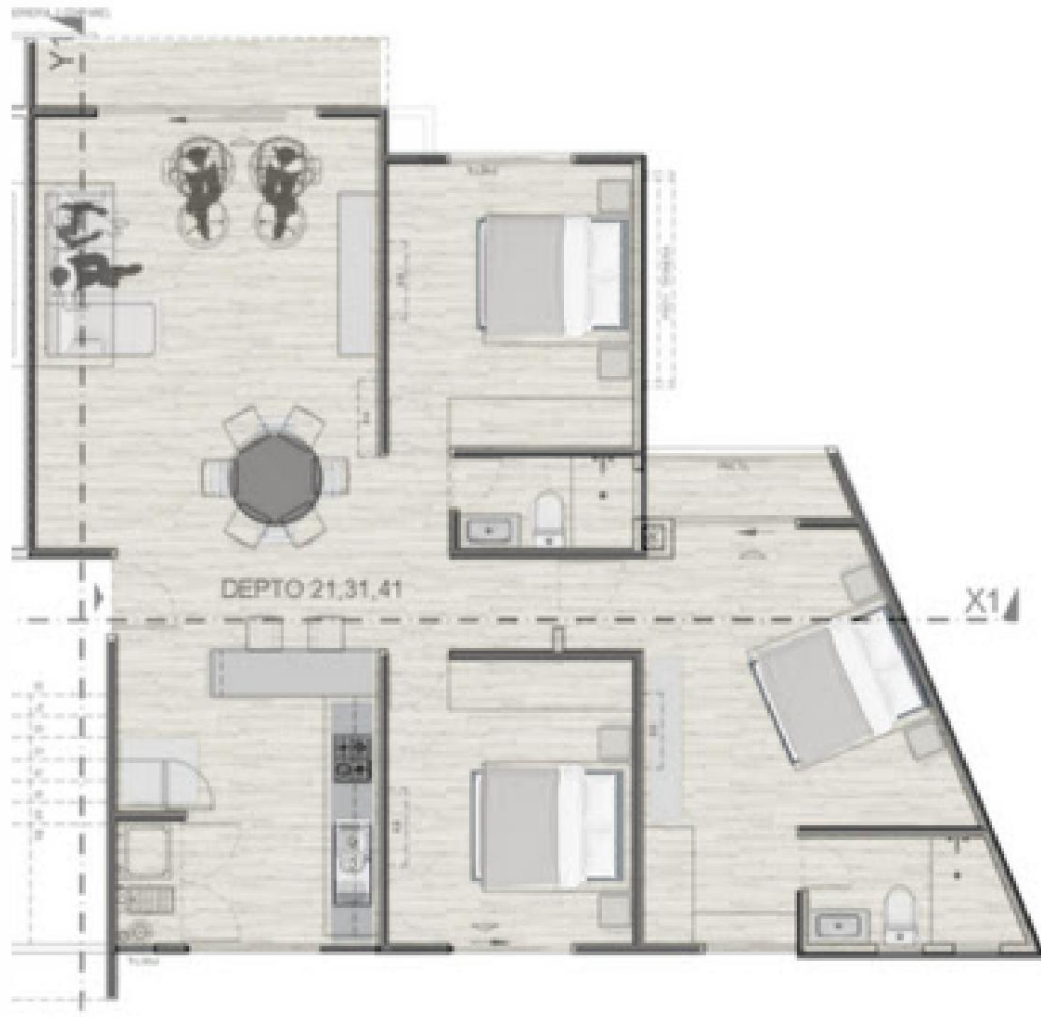
3. PROTOTYPE 2 BEDROOMS



Features

- 2 bedrooms
- 2 Full Bathrooms
- Living room
- Dining room
- equipped kitchen
- Yard Service
- Balcony
- Parking lot
- A/C preparation

4. PROTOTYPE 3 BEDROOMS



Features

- 3 bedrooms
- 2 Full Bathrooms
- Living room
- Dining room
- equipped kitchen
- Yard Service
- Balcony
- Parking lot
- A/C preparation

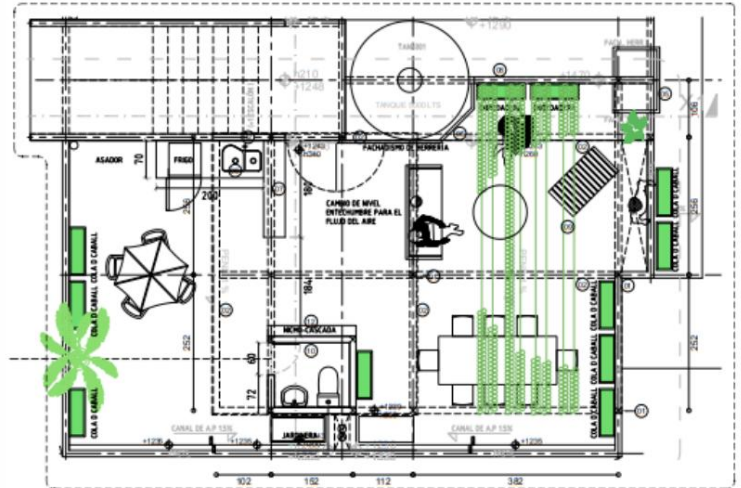
5. PROTOTYPE PENTHOUSE



ROOF GARDEN

PLANTA TIPICA

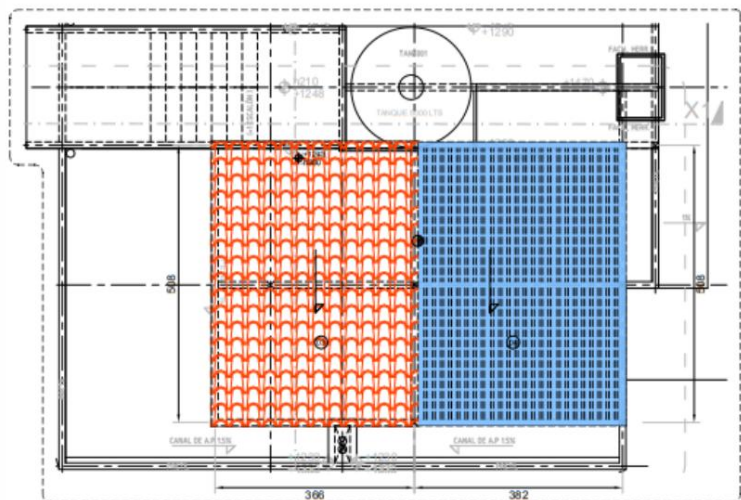
10
VER 5.2.2



ROOF GARDEN

CUBIERTAS

10
VER 5.2.2



6. CONSTRUCTION SYSTEM

The structure analyzed in this report is a four-level structure, belonging to group B, intended for departments. Said structure is made up mainly of reinforced concrete elements, block walls with a minimum compressive strength of $f_m = 40 \text{ kg/cm}^2$ as well as the lightened slab system of 20 cm total depth through the use of

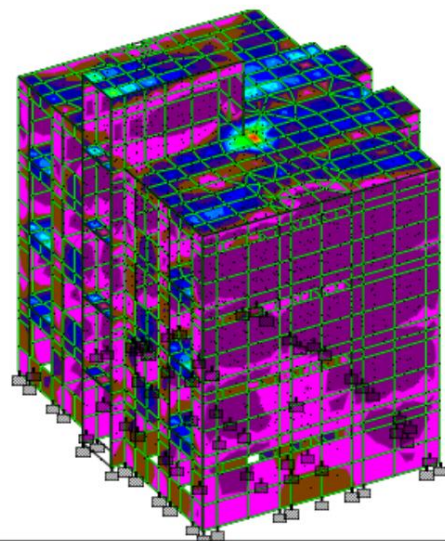
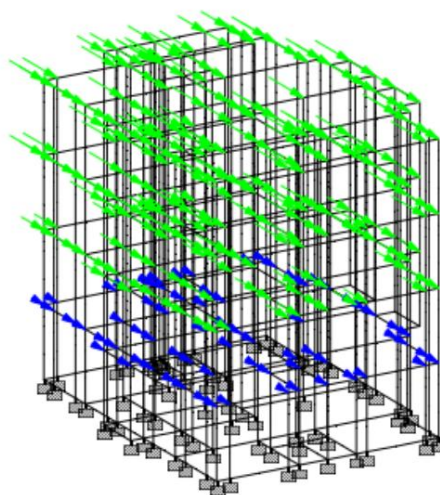
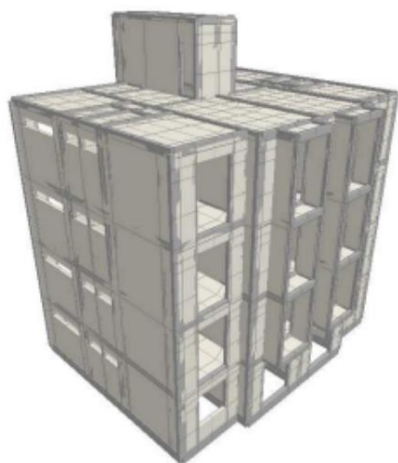
15x40x40 cm polystyrene coffer, 10 cm wide concrete ribs in both directions and a 5 cm thick concrete compression layer. with 6x6-10/10 electro-welded mesh.

The structure is intended to be placed on a surface with an estimated bearing capacity $R_T = 17,000 \text{ kg/m}^2$

this according to the information obtained in the soil mechanics provided for the client.

For calculation purposes, the structure was analyzed and reviewed using the Staad.Pro V8i calculation program, which allows it to be analyzed under the load conditions to which it will be exposed and to verify both stresses and deformations, determining the dimensions of the sections and/or or profiles to use.

The design of the structure was carried out in compliance with the provisions of the Construction Regulations of the State of Jalisco, also taking into account the provisions of the Seismic Design Manual of the Federal Electricity Commission, the Complementary Technical Standards for Design of Concrete Structures of the Federal District, in adherence to the Manual of Regulation requirements for Structural Concrete (ACI 318.14) and Comments.



7. FACILITIES

The sanitary installation is with sanitary pvc pipe in diameters of 2", 3" and 4".

The hydraulic installation is with hydraulic CPVC pipe with diameters of 1 1/4", 3/4" and 1/2" outlets.

Cistern with a capacity of 2700 liters, plus water tanks on the roof.

The gas installation is apparent, 1/2" galvanized tube. The

electrical installation is with 12 gauge coated thw cable, 14 gauge returns and electrical accessories BTicino mod. Modus 100, or similar. Load center with 6 thermal pads , 2 of 15 amp and 4 20 amp.

8. KITCHEN

Kitchen made of 15mm mdf, gray cabinets, with two upper doors and open from the bottom, 4 white lower cabinets with one and two doors, 1 drawer. Breakfast table with white blacksmith supports.



EMBLEMATIKA®
Branding + Store Design

9. WALL FINISHES

Flattened with mortar, and fine finish with stucco and paste from the uniblock brand on walls.



10. WINDOWS

2" series aluminum windows in black, Cuprum brand, and 6mm clear glass thickness



11. BATHROOM FURNITURE

W.C. TENDENZA ONE PIECE BELLAGIO BLANCO DUAL FLUSH 3-6 LTS. O SIMILAR.

CABINET JIREMART ELEGANCE PACK 45 DAKAR OAK WITHOUT MIRROR OR SIMILAR.

URREA WATERING CAN WITH SIMPLE OR SIMILAR ONION.

URREA SINGLE MIXER FOR REG or TINA LIA OR SIMILAR.

URREA LONG TOWEL BAR LIA OR SIMILAR.

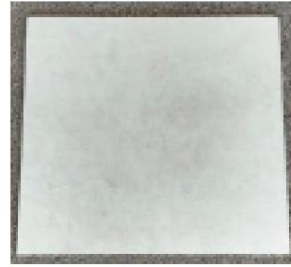
URREA ROLL HOLDER LIA OR SIMILAR

URREA SHORT SHORT P/LAV LIA OR SIMILAR.



12. FLOORS

Porcelanato PISO VSS GRIS 60X60 1.80 M2 o LINZ 59 X 59 LIGHT GREY RECT 1.41M2 o similar.



13. RECREATIONAL AREAS

The recreational area consists of a garden area, a terrace with a bar and bathrooms. Pool with dimensions 6.0 x 4.0 x 1.20.

